

## Repair or Length Modification of the PathMat Product

### Repair Kit Contents

Each kit includes parts for (2) repairs

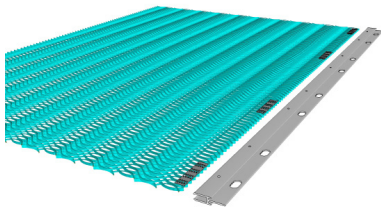
- (2) 60" plastic extrusions
- (8) re-enforcing plates
- (16) 1/4" stainless bolts
- (16) 1/4" stainless washers
- (16) 1/4" stainless locking nuts
- (1) pair of Clamping Pliers

PathMat can be repaired or shortened as desired using the PathMat Repair Kit

### Step 1

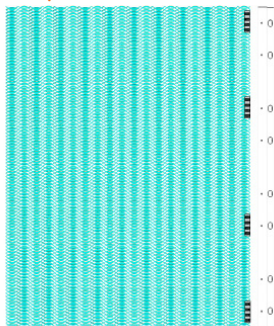
Cut off the damaged part of the mat, making a clean edge as close to square as possible.

### Step 2



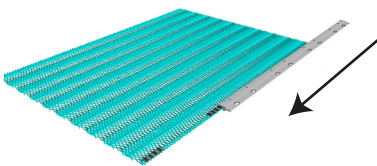
The repair kit uses (4) reinforcing plates for each connection. These plates are centered on the hole/bolt locations 1, 3, 6 and 8. Line one of the replacement extrusions up with the mat and mark the bolt locations on the mat.

### Step 3



Using the "Clamping pliers" provided, press the reinforcing plates into the mat with each one centered on your earlier hole/bolt location mark.

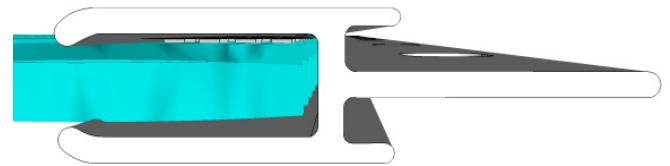
### Step 4



Slide the extrusion piece onto the mat from one side, insuring the reinforcing plates remain in place. The extrusion is slightly narrower than the mat, so center the extrusion on the mat

### Step 5

The mat with reinforcing plates should be fully engaged into the slot in the extrusion.

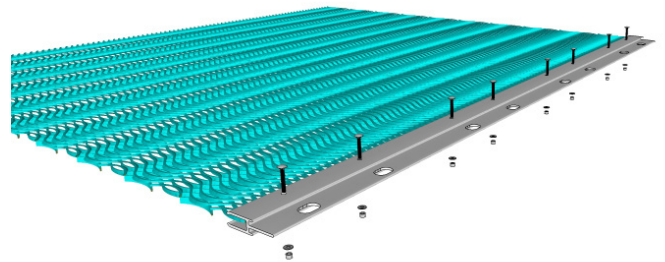


### Step 6

Drill 5/16" holes through the extrusion, reinforcing plate, the mat, and the other side of the extrusion at the hole locations.

Drill Holes 1 & 8 first and install 1/4" stainless bolts with washers and locking nuts, with the bolt heads on the foot-traffic side. Doing these two locations first insures the extrusion and mat stay together in the proper orientation for completion of the repair.

Drill holes and install the remainder of the bolts, washers, and nuts.



Your repair or length modification is now complete.